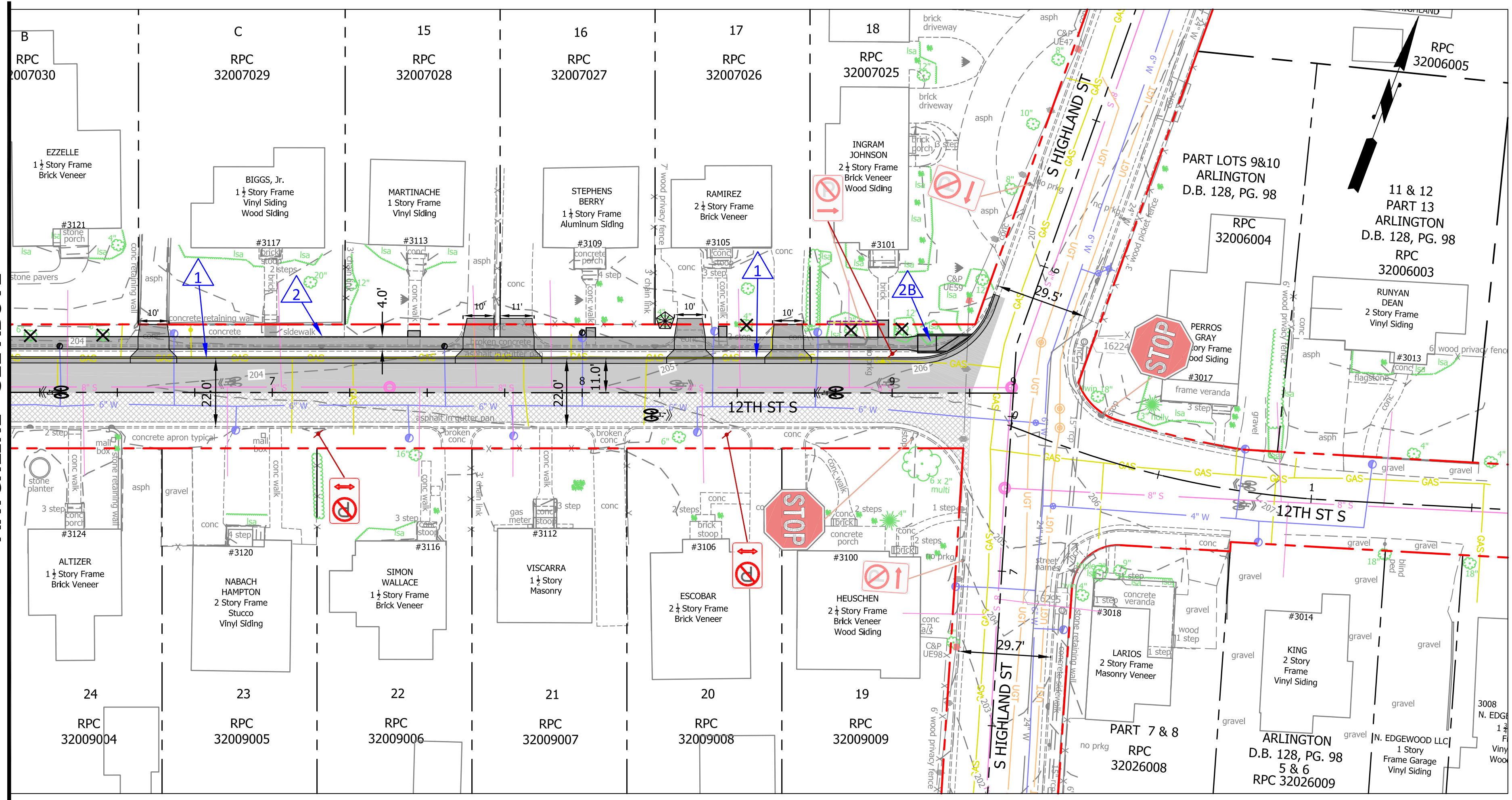


MATCHLINE - SEE BELOW



MATCHLINE - SEE ABOVE

CONSTRUCTION NOTES & LEGEND

- NEW CURB AND GUTTER (C-2) ARLINGTON COUNTY STANDARD (R-2.0)
- NEW CONCRETE SIDEWALK (S-5.0) ARLINGTON COUNTY STANDARD (R-2.0)
- NEW CURB RAMP (CG-12B) VDOT ROAD & BRIDGE STANDARDS (203.07)
- PROPOSED RETAINING WALL
- EXISTING TREE TO BE REMOVED
- PROTECT TREE DURING CONSTRUCTION WORK
- RECOMMENDED RETAINING WALL LOCATION
- OPTIONAL RETAINING WALL LOCATION



DEPARTMENT OF ENVIRONMENTAL SERVICES
 FACILITIES & ENGINEERING DIVISION
 ENGINEERING BUREAU
 2100 CLARENDON BOULEVARD, SUITE 813
 ARLINGTON, VA 22201
 PHONE: 703.228.3629
 FAX: 703.228.3606

RIGHTS RESERVED

SEAL
 30% SUBMISSION

(NOT FOR CONSTRUCTION) APPROVALS DATE

QUALITY CONTROL ENGINEER
 WATER, SEWER STREETS BUREAU CHIEF
 TRANSPORTATION DIRECTOR
 PROJECT MANAGER

REVISIONS DATE

PROJECT NAME AND LOCATION

12TH ST S

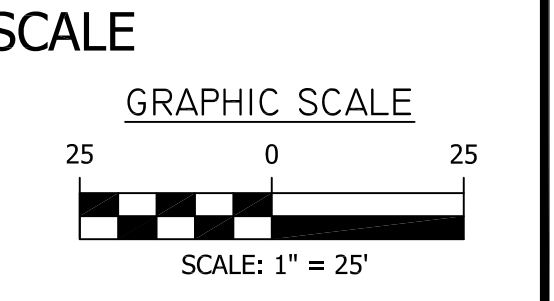
PROPOSED CONDITIONS

S GLEBE RD (VA RTE 120) TO S HIGHLAND ST

Z286

DESIGNED: J LIN
 DRAWN: J LIN
 CHECKED: M J TROUT
 MISS UTILITY TRANSMITTAL #: 5326

FILENAME: 30% PUBLIC MEETING.DWG
 PATH: \\C:\DATA\Z286\DESIGN\ACTIVE\30% PUBLIC MEETING
 PLOTTED: APRIL 4 2018
 PLOTTED BY: JILIN



SHEET 2